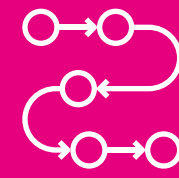


# CONSTRUCTION & DEVELOPMENT



**23% INCREASE IN BUSINESS BASE SINCE 2019**



**STRONG FUTURE DEVELOPMENT PIPELINE**



**2,000 BUSINESSES IN THE SECTOR**



**12,000+ JOBS**



**ONE OF THE FASTEST GROWING CITIES IN THE UK**

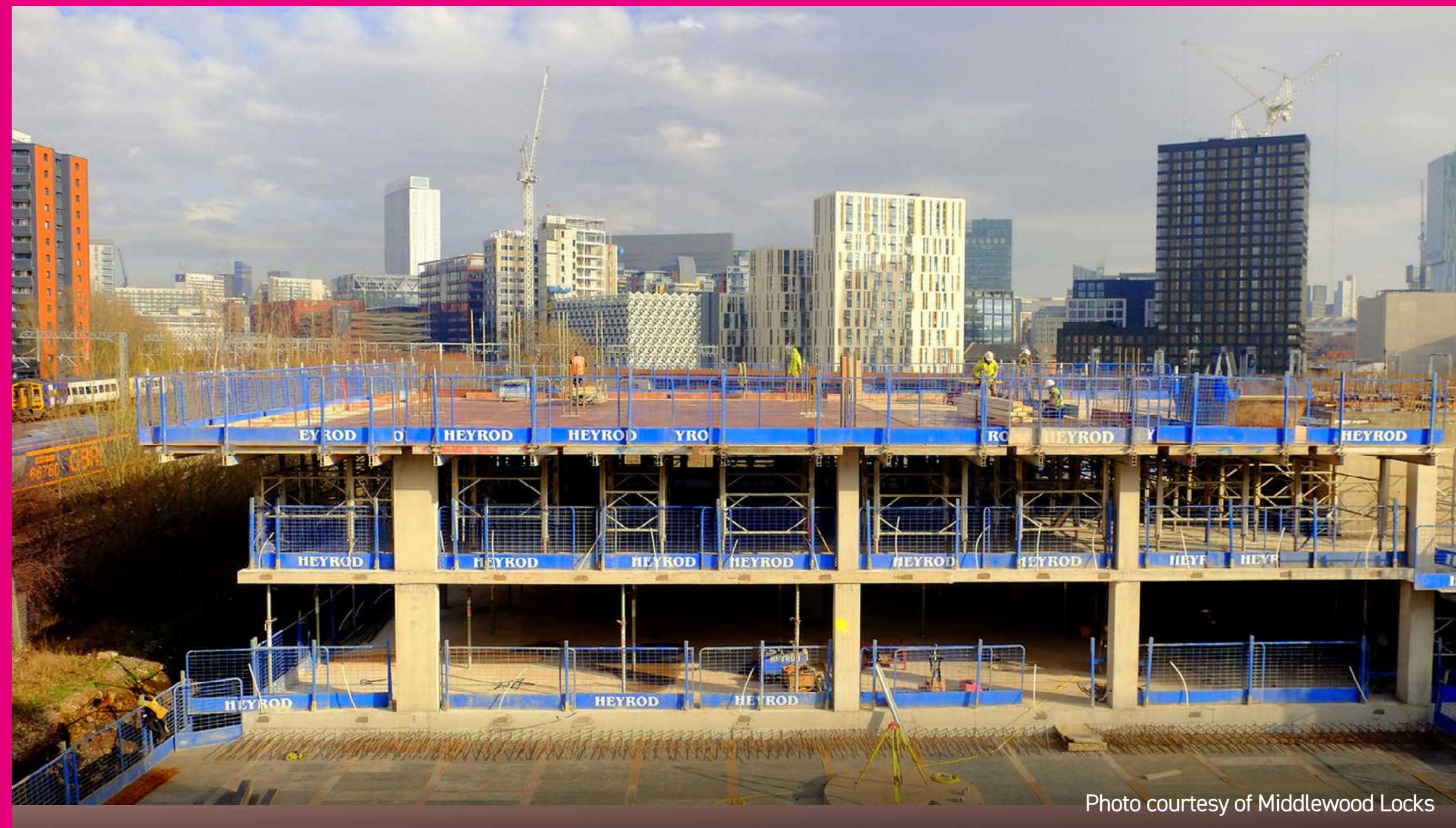


Photo courtesy of Middlewood Locks

Salford has been at the centre of a construction and development boom which has seen unprecedented levels of residential and commercial development.

Since 2017, there has been £487m of public investment and £4.18bn of private investment in the city, including the creation of 20,000 new homes. The development pipeline is exceptional, with Salford set to deliver 67,000 new homes and 1m sqm of commercial floorspace over the next 20 years.

Salford has experienced significant economic growth alongside the major growth in its population and is one of the fastest growing cities in the UK. Its local construction sector has flourished in this context and the city provides a fantastic destination for construction firms that want to be close to development opportunities.

There are almost 2,000 businesses in the sector providing over 12,000 jobs and the business base has grown by over 23% since 2019. Salford has specialised and growing sub sectors particularly in commercial real estate, closely linked to the development of the city.

The city has also pioneered work to secure job opportunities for local residents through the Build Salford initiative. The city has a strong talent pipeline in place with skills provision delivered through Salford City College, the University of Salford and other partners guided by a five-year Salford Employment and Skills Strategy, which aims to help better connect local people to the growth that is taking place in the city and narrow inequalities.

**£487M OF PUBLIC INVESTMENT SINCE 2017**

**£4.18BN OF PRIVATE INVESTMENT IN THE CITY**

# Muse

**Muse is a nationwide placemaker, with 40 years of experience creating mixed-use communities across the UK.**

Their track record of leading complex, mixed-use regeneration gives them the experience to deliver successful places, with the emphasis on sustainability, community and quality.

Part of Morgan Sindall Group, Muse combines local insight with the resources and capabilities of a nationwide organisation, with regional businesses based in Salford, Leeds, London and Birmingham. The business's order book currently stands at £4.6bn – a 150% increase since last year.

Muse's ECF partnership with Homes England and Legal & General has led the regeneration of Salford Central, transforming a vast 50-acre space into a community of world-class workspaces for businesses, including the award-winning, net zero in operation workplace, Eden, and over 1,000 new homes. It is now working with Salford City Council and the University of Salford on the Crescent Salford Masterplan, set to create thousands of new homes and opportunities for businesses, jobs and education.

Muse was recently selected as Salford City Council's strategic regeneration partner, to deliver an improved and fit-for-purpose town centre for the residents of Eccles.

Muse is working with partners, creating successful places across the North West including Stockport, Oldham, St Helens, Wythenshawe, Cheshire, Blackpool and Prestwich, winning multiple awards including a national Property Week RESI Award for Outstanding Contribution to Affordable Housing.

Riverside House, Irwell St, Salford, M3 5EN

[museplaces.com](https://museplaces.com)



**NATIONWIDE  
PLACEMAKER**



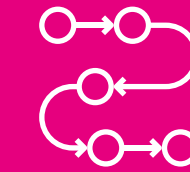
**CONNECTING COMMUNITIES,  
WITH SALFORD RISE UNDER  
CONSTRUCTION**



**GROWING  
BUSINESS**



**120  
EMPLOYEES**



**£4.6 BILLION  
DEVELOPMENT  
PIPELINE**

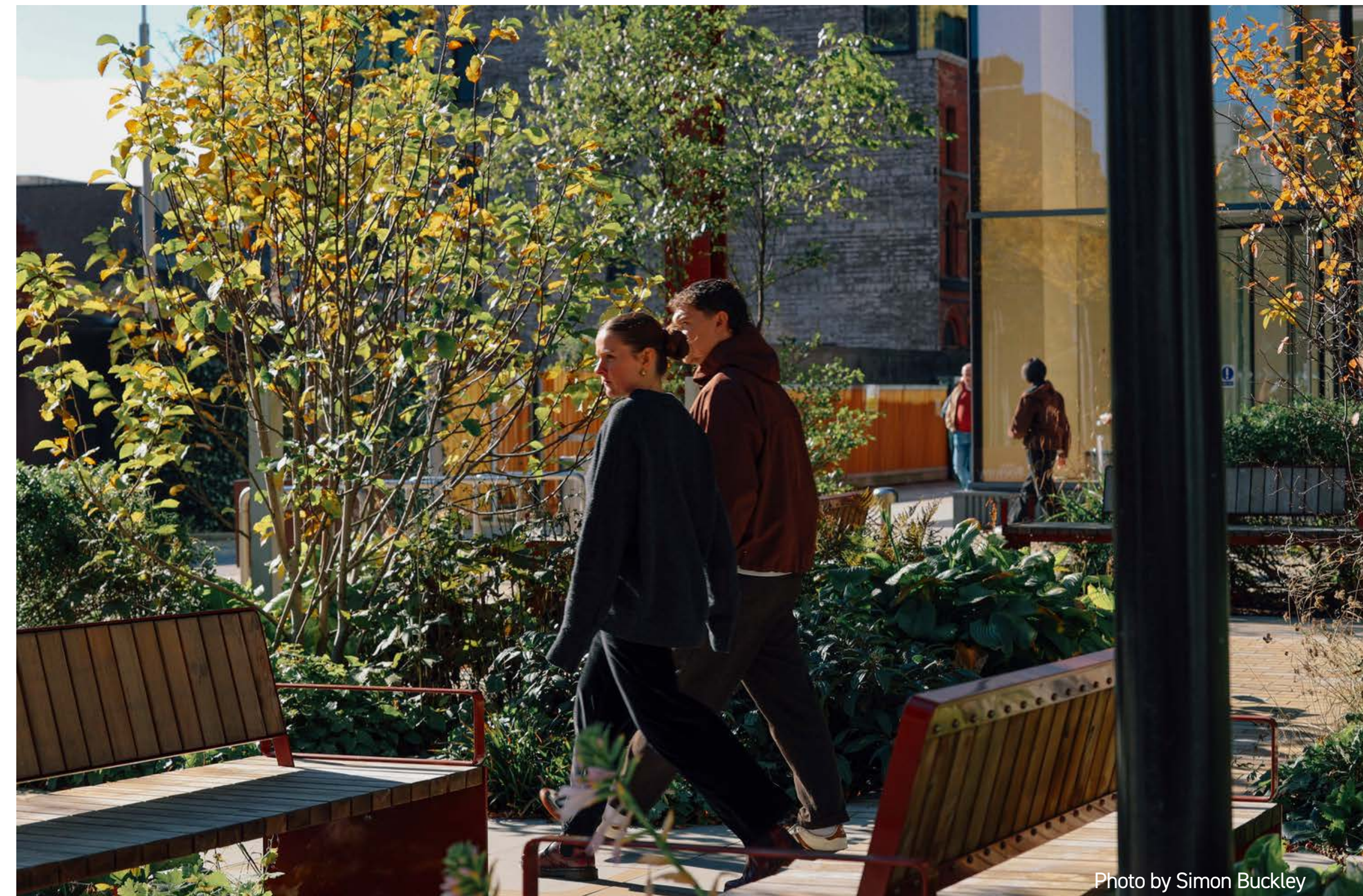


Photo by Simon Buckley

# Morgan Sindall

**Morgan Sindall Construction is a national main contractor with a £1.9 billion turnover.**

Its decentralised structure sees its North West operations managed from a regional business unit in Salford, employing around 145 people and generating £130 million in revenue.

It is part of Morgan Sindall Group plc, a collection of specialist businesses delivering construction and regeneration projects across the UK. The Group, which also includes Salford-based developer Muse, has over 8,000 employees and in 2024 achieved over £4.5 billion in revenue.

In Salford, Morgan Sindall has been at the heart of the city's regeneration over the past two decades. Key projects include the BUPA Headquarters at MediaCity and several developments at New Bailey for the English Cities Fund, including Slate Yard Phase 3 and Novella. The company maintains a strong industry partnership with the University of Salford, benefiting both employees and students.

Morgan Sindall is also a leader in skills and training within the Salford construction sector, exemplified by their 'Knowledge Quad' initiative. This facility, initially hosted at The University of Salford and now at the C2 development, provides a base within a live construction site for educational engagement and employment courses such as Build Salford, and a wide range of other skills and training activities. Its onsite location offers users a unique insight into a working construction environment.

Anchorage 2, Salford Quays, M50 3YW  
[morgansindallconstruction.com](https://morgansindallconstruction.com)



**GENERATED £130 MILLION IN REVENUE LOCALLY**



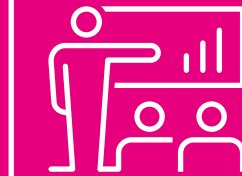
**STRONG INDUSTRY PARTNERSHIP WITH UNIVERSITY OF SALFORD**



**NORTH WEST OPERATIONS UNIT BASED IN SALFORD**



**THE GROUP HAS 7K+ EMPLOYEES NATIONALLY**



**SECTOR LEADER IN SKILLS AND TRAINING**





Photo by Mark Waugh

# Contact us

---

For further information on investing in Salford, for testimonials from previous investors supported, or for any questions, contact:

**Business and Investment Team, Salford City Council**



0161 793 3969



[invest@salford.gov.uk](mailto:invest@salford.gov.uk)



[investsalford.com](https://investsalford.com)

---

For further information about Manchester's inward investment agency, contact:

**MIDAS**



[info@midas.org.uk](mailto:info@midas.org.uk)



[investinmanchester.com](https://investinmanchester.com)

---

Salford City Council

**Invest** Salford

 **MIDAS**  
investinmanchester.com