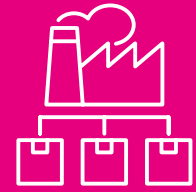


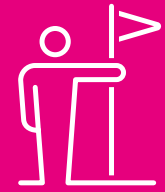
THE INDUSTRIAL ECONOMY



**23,000 JOBS
IN THIS
SECTOR**



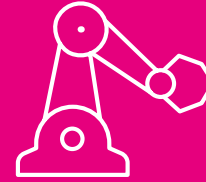
**GROWTH IN LOGISTICS,
WHOLESALE, AND
MANUFACTURING**



**LEADING GM
INDUSTRIAL
LOCATIONS**



**OPPORTUNITY FOR FURTHER
INDUSTRIAL GROWTH**



**SPECIALISMS IN
ACOUSTICS, ROBOTICS
AND ENERGY EFFICIENCY**



Salford has a diverse industrial base comprising almost 2,000 businesses providing 23,000 jobs.

The industrial business base grew by 19% between 2019 and 2023, far outstripping the Greater Manchester (GM) average (2%).

It has specialised and growing sectors in logistics, wholesale and manufacturing including supply into the construction supply chain. Salford's strategic position, running from the heart of the GM City Region, to the west of the city with its connections to the Liverpool City Region, provides us with leading industrial locations such as Northbank Industrial Estate and Agecroft Enterprise Park.

Salford has seen significant innovation in its industrial base in recent years and companies located here can benefit from links with academic partners such as the University of Salford and other GM universities and their specialist innovation assets to test emerging technologies.

Looking forward, with strategic land availability in the west of the city as part of the Greater Manchester Western Gateway, there is room for further industrial growth to accommodate future industrial sectors including advanced manufacturing and materials, logistics, green industries and clean growth sectors.

Salford is also well placed in relation to Industry 4.0 given the high productivity of its business base and assets at the University of Salford, with specialisms in Acoustics, Robotics and Energy efficiency. Major employers include Kingsland Drinks, Hydes Brewery, BOC (British Oxygen Co), CPM Packaging Ltd and Mettler Toledo.

**SALFORD'S INDUSTRIAL
BASE COMPRISES OF
2,000 COMPANIES**

**THE INDUSTRIAL
BUSINESS BASE GREW
BY 19% BETWEEN 2019
AND 2023**

CPM Packaging Ltd

Founded in 1996, CPM Packaging Ltd (formerly known as Proline Engineering Ltd) supplies bespoke can handling conveying systems primarily to the metal packaging industry and filling industry.

Previously based in Bolton, they moved to their 36,000 sq ft Salford facility in 2013 to accommodate an increase in customer demand. There they employ 85 people, mostly in engineering roles.

In 2017 the company became part of CPM Holdings, a US based group with 40 facilities across 4 continents, and an annual turnover of \$820 million.

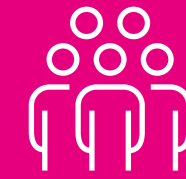
CPM Packaging Ltd supply mechanical, air, vacuum and magnetic conveyors which are designed and built in-house at their Worsley based facility. They offer a comprehensive aftermarket care service with a team of experienced field service engineers who are deployed worldwide for installation, commissioning and maintenance, along with a dedicated spare parts team.

The company are continuously developing their product portfolio, with a specific focus on sustainability which is demonstrated in the latest designs which minimise energy usage without compromising on line speed or product quality.

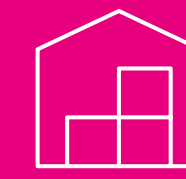
In 2022, CPM Packaging Ltd merged with Blackburn-based sister company Greenbank Technology. Since the two businesses both predominantly worked within the canmaking industry, this has further strengthened the position of CPM and allowed for sharing of resources and personnel.

Wardley Industrial Estate, Worsley, Salford, M28 2QB

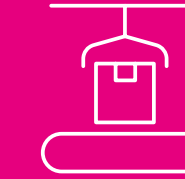
[onecpm.com](https://www.onecpm.com)



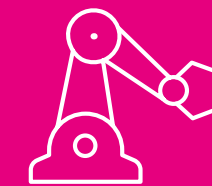
**85 STAFF
EMPLOYED**



**36,000 SQ FT
FACILITY**



**950KM OF CONVEYING
INSTALLED WORLDWIDE**



**MACHINERY INSTALLED IN 36
COUNTRIES ACROSS 6 CONTINENTS**



**6,000 PRODUCTS
INSTALLED WORLDWIDE**



Mettler Toledo

METTLER TOLEDO offer precision instruments and services for many applications in research and development, quality control, production, logistics and retail to customers around the world.

They provide measurement solutions across their customers' value chain and are one of the largest global sales and service organisations among precision instrument companies. They design instruments not only to gather valuable data, but also to facilitate the processing, analysis, and transfer of this data into customers' management information systems.

Founded in 1945, the company has more than 17,500 employees in over 100 countries. METTLER TOLEDO is geographically diversified with sales in 2023 derived 41% from the Americas, 32% from Asia/Rest of World, and 27% from Europe. The company has an extensive global sales and service and a strong manufacturing presence in Europe, the United States, and China.

Opening its doors in 1989, the Safeline arm of METTLER TOLEDO manufacture high quality metal detection equipment for the food, pharmaceutical and chemical industries worldwide. The location is home to 290 talented employees and an acclaimed Apprenticeship Programme that looks to nurture potential leaders of the future.

Recently the Salford site has enjoyed significant investment that has not only transformed the working environment but also supported the in-house R&D team with the launch of a new software management system that has helped drive new business.

Montford St, Salford, M50 2XD

[mt.com](https://www.mt.com)



\$1.1 BN OPERATING INCOME (2023)



\$3.9BN REVENUE (2023)



**APPROX. 17,500
EMPLOYEES
WORLDWIDE**



**\$4.5BN TOTAL
ASSETS (2023)**



**\$800M NET
INCOME (2023)**






Photo by Mark Waugh

Contact us

For further information on investing in Salford, for testimonials from previous investors supported, or for any questions, contact:

Business and Investment Team, Salford City Council

 0161 793 3969

 invest@salford.gov.uk

 investsalford.com

For further information about Manchester's inward investment agency, contact:

MIDAS

 info@midas.org.uk

 investinmanchester.com
